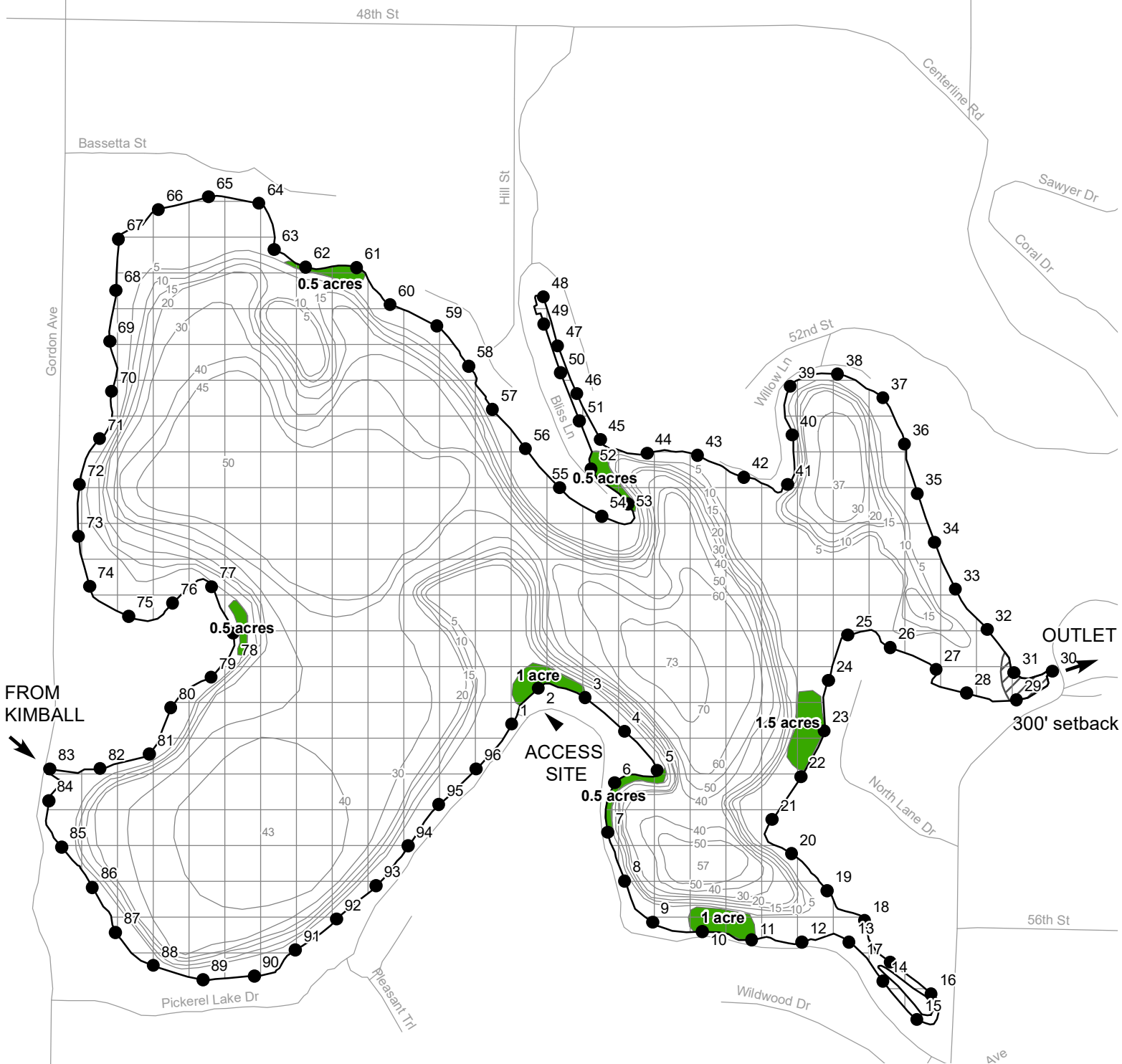


# PICKEREL LAKE NEWAYGO COUNTY, MICHIGAN AUGUST 9, 2018 TREATMENT MAP

□ = 1 ACRE

## Treatment

Harpoon Granular @ 200 lbs/acre (wild celery) = 5.5 acres



LAKE AREA = 313 ACRES  
REVISION DATE: APRIL, 2018



1 inch = 800 feet

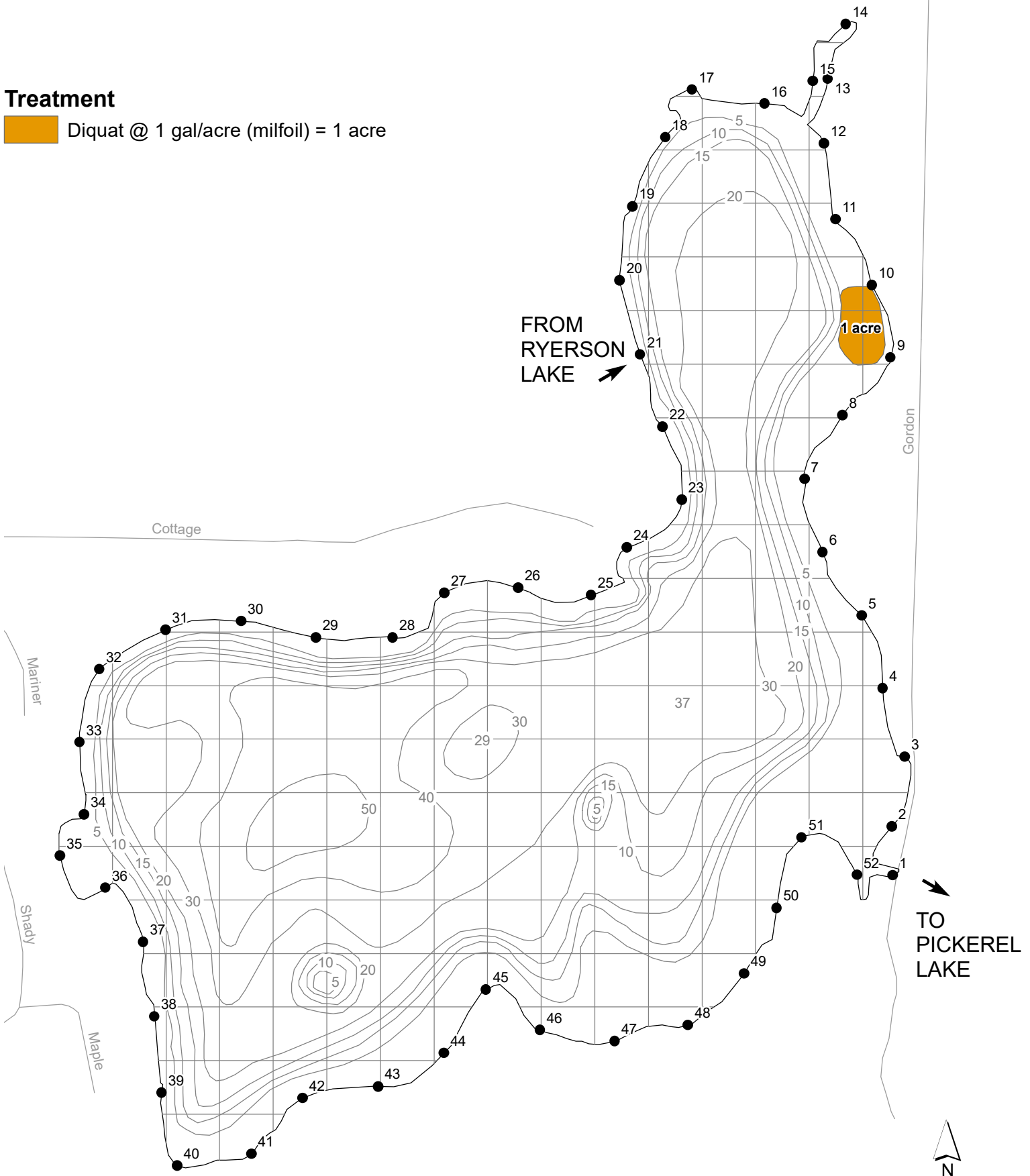
progressive ae

# KIMBALL LAKE NEWAYGO COUNTY, MICHIGAN AUGUST 9, 2018 TREATMENT MAP

= 1 ACRE

## Treatment

Diquat @ 1 gal/acre (milfoil) = 1 acre



LAKE AREA = 148 ACRES  
REVISION DATE: APRIL, 2018

1 inch = 500 feet